

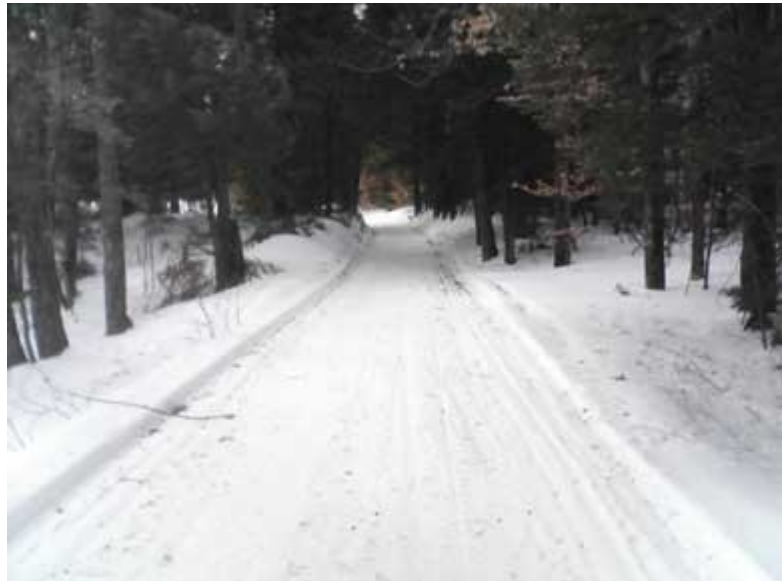


*Moose Mountain hikers*

### **Moose Mountain Reservation**

With hilltop views and an established trail network, the Moose Mountains property is enjoyed by hikers, skiers, snowmobilers, hunters and nature watchers. As one of last large forested areas in southeast New Hampshire, this land supports a variety of native wildlife, especially species that require a large home range like moose, black bear, deer, coyote and bobcat. A large heron rookery is located in the wetlands along the eastern portion of the property. This 2,185-acre reservation includes nine miles of stream banks, including the headwaters of the Piscataqua watershed. This watershed feeds the drinking water supplies and wells of the downstream communities of Milton, Wakefield and Somersworth.

*Trail maintained by Evergreen Valley and 7 Lakes Snowmobile Clubs*



*Trail maintained by Evergreen Valley and 7 Lakes Snowmobile Clubs*